



THE welding table

weldingnews 2017/4



EXCELLENT, HIGH PRECISION CRAFTSMANSHIP MADE EASY
with the inventor's original 3D clamping system



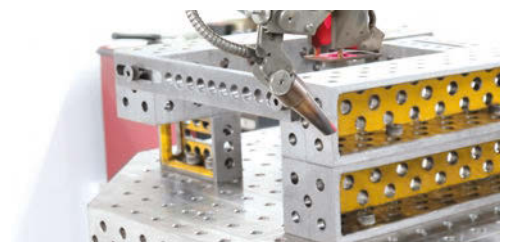
DEMMELEER ON THE ROAD TO EXPANSION – HALL EXTENDED BY 7,500 M²

Page 2



QUICK AND EASY CLAMPING – THE RIGHT TOOL FOR EVERY CHALLENGE

Page 4



INNOVATIONS AND NEW PRODUCTS FROM DEMMELEER

Page 14



We are making 7,500 m² of additional space for innovative products Assembly and logistics centre



DEMMELEER WITH THEIR
NEW EXHIBITION STAND!

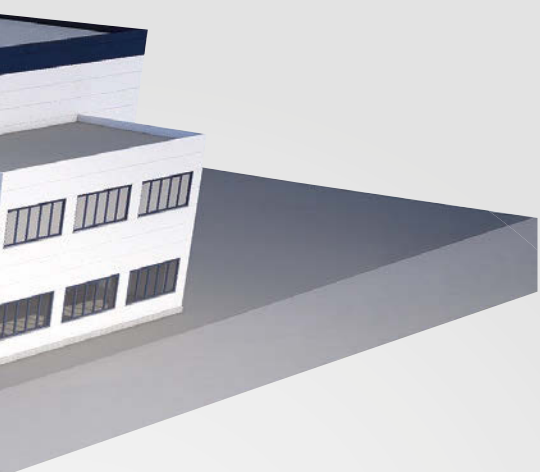


Trade fair dates 2017/2018

DEMMELEER is represented at the leading industry trade fairs, directly or through our distribution partners. We are happy to inform you about current products and innovations on site. We are looking forward to your visit!



OUR PERFORMANCE
makes THE DIFFERENCE



Ladies and gentlemen, business partners and customers,

At the industries leading international trade fair, the **EMO** in Hanover and at **“Schweißen & Schneiden”**, which took place in Düsseldorf this year, we were able to present our innovations alongside new, and classic products. Despite various international challenges, the market situation is very good. We experienced this first hand with how popular our exhibition stand proved to be. We would like to take this opportunity to thank you for visiting us and for showing interest.

In addition to the new products that you will find on **page 14** and **15** of the current issue of **weldingnews** we have also redesigned all of our catalogues. Inside you will find all the latest innovations and developments from the think tank here at DEMMELER. Moreover, we were able to break in our exhibition stand in Düsseldorf. This enabled us to better present our products and to welcome you as our partner to future exhibitions.

As a **driving innovative force** in the industry and recognised **TOP100-Innovator 2017** we are constantly investing in the development of existing products as well as new products. On top of that we are currently building a new logistics and assembly centre. With **7,500 m²** of new hall space, this is the largest investment in the history of the company. This really drives home our commitment to our company’s site in Allgäu. DEMMELER represents **the idea behind “Made in Germany”** and is looking to continually expand upon its position as a leader when it comes to quality.

We hope you enjoy thumbing through this edition of **weldingnews**.

Kind regards
Johannes Demmeler
Executive Partner

Now available: The new
DEMMELER main catalogue.



THE 19TH CHINA
INTERNATIONAL
INDUSTRY FAIR



Paris Nord Villepinte
Sales partners: Enomax
21/11 – 24/11/2017



Hamburg
23/01 – 26/01/2018



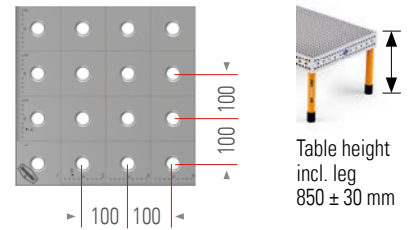
Düsseldorf
20/02 – 24/02/2018

Shanghai
Sales partners: Shanghai Welding &
Cutting Engineering Co., Ltd.
07/11 – 11/11/2017



3D welding table PROFIEcoLINE (PE) 28

DEMMELE 3D welding table ProfiEcoLINE (PE) 28



- Worktop with D28 system bores in a 100 mm x 100 mm grid
- 3-hole drilling pattern in the table side plates with D28 system bores, 50 mm grid in the top row with additional 100 mm grid in the middle and in the bottom row
- Table sizes optionally available in hardened version, DEMONT 760 M and DEMONT 860 M, (up to 860 Vickers)
- Precision scaling with millimetre graduation
- Coordinate marking of the bores in the X and Y-direction

Pivoting leg with stable M 30 x 2 threaded spindle, finely adjustable ± 30 mm
Leg sleeve prevents pinching the welding hose and protects the threaded spindle against dirt.

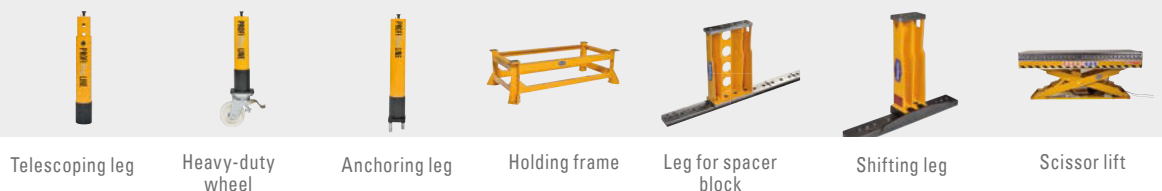
Table size L x W	TABLE WITH STANDARD LEG	DEMONT 760 M HARDENED	DEMONT 860 M HARDENED
1000 x 1000 mm	PE28-01001-001	PE28-01001-011	PE28-01001-021
1200 x 800 mm	PE28-11019-001	PE28-11019-011	PE28-11019-021
1500 x 1000 mm	PE28-01011-001	PE28-01011-011	PE28-01011-021
1200 x 1200 mm	PE28-01056-001	PE28-01056-011	PE28-01056-021
1500 x 1500 mm	PE28-01031-001	PE28-01031-011	PE28-01031-021
2000 x 1000 mm	PE28-01002-001	PE28-01002-011	PE28-01002-021
2000 x 2000 mm	PE28-01006-001	PE28-01006-011	PE28-01006-021
2400 x 1200 mm	PE28-01003-001	PE28-01003-011	PE28-01003-021
3000 x 1500 mm	PE28-01004-001	PE28-01004-011	PE28-01004-021
4000 x 2000 mm	PE28-01005-001	PE28-01005-011	PE28-01005-021
4800 x 2400 mm	PE28-11085-001	PE28-11085-011	PE28-11085-021



Special sizes available upon request! On request the table is also available in a cast or stainless steel version!

Errors and changes reserved.
Offer is non-binding.

DIFFERENT LEG VARIETIES
ARE AVAILABLE UPON
REQUEST.




PROFIEcoLINE Set 732 Item no.: E28-52000-732 (74-pieces)


PE Set 732	Item no.	Article designation
4	PE28-03001-000	ECO clamping and locating angle 175x175x50 mm
1	PL28-03002-000	Clamping and locating angle, right 300x275 mm
1	PL28-03002-001	Clamping and locating angle, left 300x275 mm
1	PE28-03003-000	PE clamping and locating angle, right 600x275x80 mm
1	PE28-03003-001	PE clamping and locating angle, left 600x275x80 mm
4	PE28-03008-000	ECO clamping and locating angle 275x175x50 mm
8	E28-05001-000	ECO universal stop / large 225x50x25 mm
2	E28-05002-000	ECO universal stop / small 100x50x25 mm
2	E28-05003-000	ECO stop-strip L 500 500x100x25 mm
2	E28-05003-001	ECO stop-strip L 800 800x100x25 mm
2	E28-05013-000	ECO locating disk 25-50 mm
2	E28-05013-001	ECO locating disk 25-75 mm
24	D28-06025-000	PPC bolt / short
10	E28-07005-000	ECO screw clamp 180° with spindle
4	E28-07009-000	ECO variable screw clamp 45° with spindle
4	E28-09003-000	ECO V-block locations Ø 58 mm / 130° for tubes up to Ø 70 mm
1	E28-10002-000	ECO round brush Ø 28 mm
1	E28-10008-000	ECO ball-head Allen key AF 8

You can individually assemble or supplement your sets from the BROAD SELECTION OF DEMMELER accessories. The DEMMELER general catalogue is available at www.demmeler.com.

Errors and changes reserved. Offer is non-binding.

PROFIPlusLINE Set 731 Item no.: D28-52000-731 (120-pieces)



PROFIPremiumLINE Set 730 Item no.: P28-52000-730 (122-pieces)

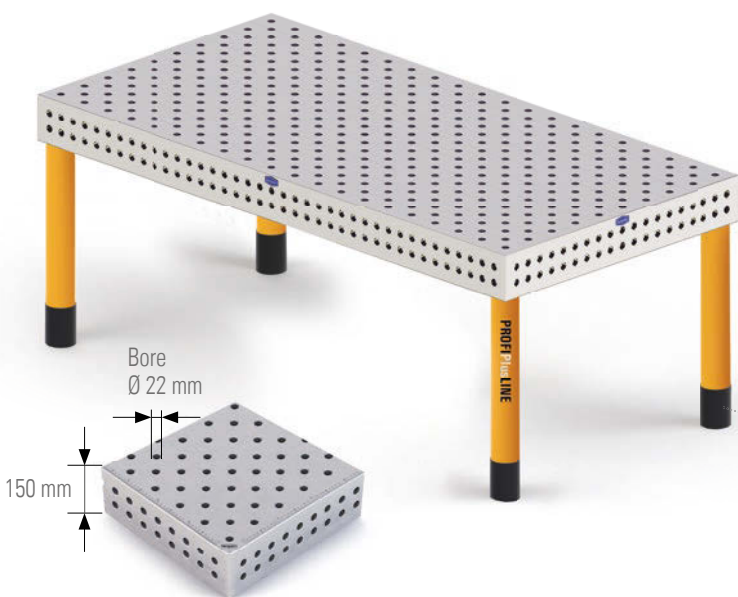
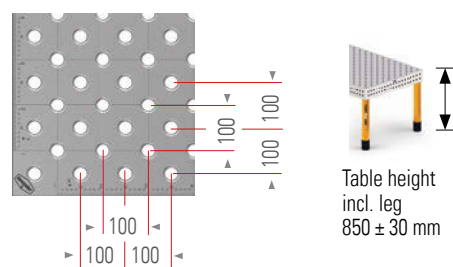


PL Set 731	PP Set 730	Item no.	Article designation
1		PL28-03003-001	Clamping and locating angle, left 600x375 mm
1		PL28-03003-000	Clamping and locating angle, right 600x375 mm
1		PL28-03002-001	Clamping and locating angle, left 300x275 mm
1		PL28-03002-000	Clamping and locating angle, right 300x275 mm
	2	PL28-03001-015	Clamping and locating angle 225x200x50x125 mm, hardened (bore / bore / oblong hole)
4		PE28-03008-000	Clamping and locating angle 275x175x50 mm
4	4	PE28-03001-000	Clamping and locating angle 175x175x50 mm
	2	PP28-03001-017	Clamping and locating angle 250x300x50x150 mm, aluminium-titanium (bore / bore / oblong hole)
	1	P28-03002-001	PP clamping and locating angle, left 300x275 mm, hardened
	1	P28-03002-000	PP clamping and locating angle, right 300x275 mm, hardened
	1	P28-03004-001	PP clamping and locating angle, aluminium-titanium, left 800x375 mm
	1	P28-03004-000	PP clamping and locating angle, aluminium-titanium, right 800x375 mm
	1	P28-03003-003	PP clamping and locating angle, aluminium-titanium, left 600x375 mm
	1	P28-03003-002	PP clamping and locating angle, aluminium-titanium, right 600x375 mm
4	4	D28-03001-005	Clamping and locating angle / small 175x75x50 mm, scale on both sides
4		D28-05009-000	Universal stop L 300 - 300x50x25 mm
	4	D28-05001-010	Universal stop with scale 225x50x25 mm
	4	D28-05001-001	Universal stop / large with plunger 225x50x25 mm
4		D28-05001-000	Universal stop / large 225x50x25 mm
	1	D28-05013-012	PP angle bracket, left 200x200x75 mm, hardened
	1	D28-05013-011	PP angle bracket, right 200x200x75 mm, hardened
2		D28-05013-010	Angle-setting template, scale on both sides, 0 - 90°, 15°, 30°, 45°, 60°
	2	D28-05003-008	Stop-strip L 1000 - 1000x100x25 mm
2	2	D28-05003-001	Stop-strip L 800 - 800x100x25 mm
2	2	D28-05003-000	Stop-strip L 500 - 500x100x25 mm
2	2	D28-05013-001	Locating disk Ø 100 - stop dimension 25-75 mm, continuous
2	2	D28-05013-000	Locating disk Ø 75 - stop dimension 25-50 mm, continuous
4	8	D28-05015-000	Displacement stop - 150x50x25 mm, scale on both sides
2		D28-06026-000	PPC bolt/long - Ø 28-0,02, SW 14
24	24	D28-06025-000	PPC bolt/short - Ø 28-0,02, SW 14
12	12	D28-06009-000	Stop and positioning bolt Ø 28 / 40x74 mm
	4	D28-07009-033	Performance-clamp incl. spindle - vertical tube 250 mm, angle-adjustable +-50°
	2	D28-07009-012	Variable screw clamp 45° with quick-action clamping cylinder - vertical tube 350 mm
4	2	D28-07009-011	Variable screw clamp 45° with adjusting screw - vertical tube 350 mm
4		D28-07009-000	Variable screw clamp 45° with adjusting screw - vertical tube 220 mm
4		D28-07008-000	Variable screw clamp 90° - vertical tube 260 mm
	4	D28-07005-033	Screw clamp 180° with spindle - vertical tube 500 mm
4	4	D28-07005-015	Screw clamp 180° with quick-action clamping cylinder - vertical tube 350 mm
4	4	D28-07005-014	Screw clamp 180° with spindle - vertical tube 350 mm
4		D28-07005-000	Screw clamp 180° with spindle - vertical tube 220 mm
2	2	D28-07002-000	Compensating swing clamp 200 mm with spindle
	2	D28-07001-001	Compensating swing clamp 150 mm with quick-action clamping cylinder
2		D28-07001-000	Compensating swing clamp 150 mm with spindle
2	4	D28-09001-005	Spacer set with thread - Ø 50x125 mm
2		D28-09001-000	Spacer set 11 pieces - Ø 50x125 mm
8	8	D28-09003-000	V-block locations blackened steel, Ø 58 mm - 130° - for tubes up to Ø 70 mm
1	1	D28-10002-000	Round brush Ø 28x260 mm
1	1	D00-10007-000	Bench stone 200x50x25 mm
1	1	D00-10009-000	Ground connector D16/D28 - for cable 50-70 mm², load up to 500 A
1	1	D00-10016-001	Extraction tool - 250x40 mm, AF 14

D22 System 3D welding table PROFIPlusLINE (PL) 22



DEMMELER 3D welding table PROFIPlusLINE (PL) 22

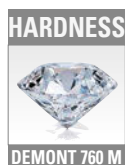


- Worktop with D22 system bores in a 100 mm × 100 mm diagonal grid
- 2-hole drilling pattern in the table side plates with D22 system bores in 50 mm grid.
- Table sizes optionally available in hardened version, DEMONT 760 M (up to 760 Vickers)
- Precision scaling with millimetre graduation
- Coordinate marking of the bores in the X and Y-direction



Pivoting leg with stable M 28 × 2 threaded spindle, finely adjustable ± 30 mm
Leg sleeve prevents pinching the welding hose and protects the threaded spindle against dirt.

Table size L x W	TABLE WITH STANDARD LEG	DEMONT 760 M HARDENED
1000 x 1000 mm	PL22-01001-001	PL22-01001-011
2000 x 1000 mm	PL22-01002-001	PL22-01002-011
2400 x 1200 mm	PL22-01003-001	PL22-01003-011
3000 x 1500 mm	PL22-01004-001	PL22-01004-011



Special sizes available upon request!
On request the table is also available in a cast or stainless steel version!

Errors and changes reserved.
Offer is non-binding.

DIFFERENT LEG VARIETIES
ARE AVAILABLE UPON
REQUEST.



Telescoping leg



Heavy-duty wheel



Anchoring leg

PROFIPlusLINE Set 710

Item no.: D22-52000-710 (26-piece)



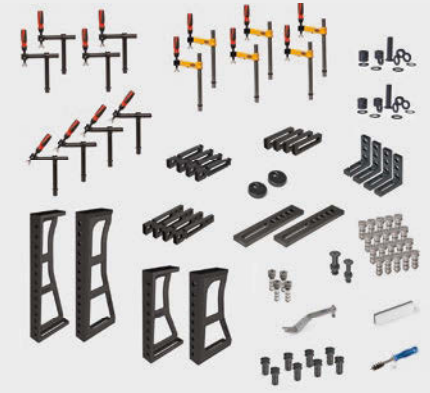
PROFIPlusLINE Set 720

Item no.: D22-52000-720 (57-piece)



PROFIPlusLINE Set 730

Item no.: D22-52000-730 (77-piece)



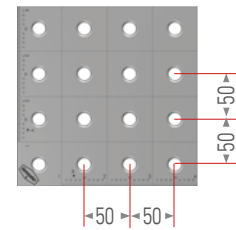
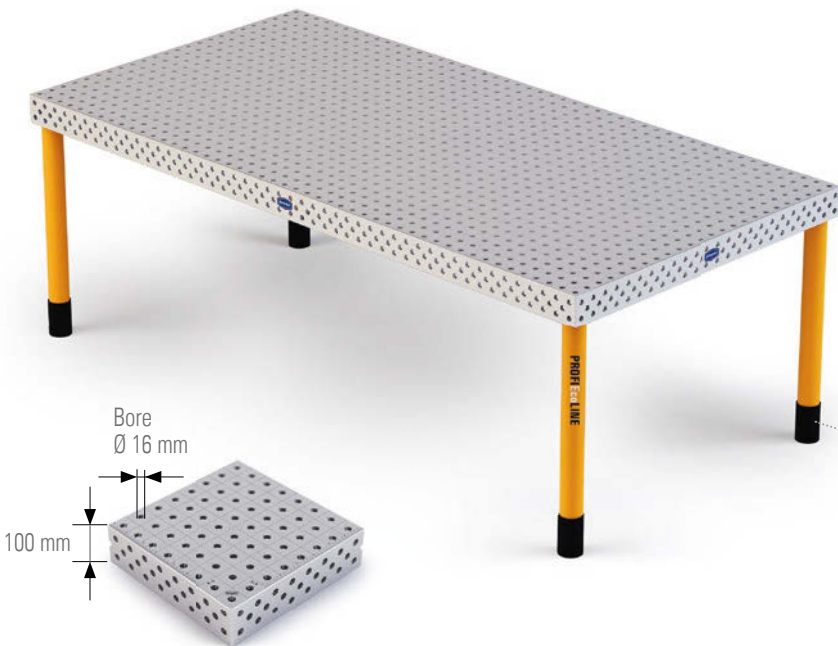
PL Set 710	PL Set 720	PL Set 730	Item no.	Article designation
		4	D22-06026-000	PPC bolt/long – Ø 22, SW 6
10	16	20	E22-06025-000	EcoLINE bolt/short – Ø 22 SW 6
	6	8	D22-06009-000	Stop and positioning bolts Ø 22/31 × 52 mm
	2	2	D22-09001-005	Spacer set with thread – Ø 50 × 125 mm, height compensation 22-105 mm, continuous
	2	2	D22-05013-000	Stop washer Ø 75 – stop dimension 25-50 mm, continuous
	2	2	D22-09001-000	Spacer set 11 pieces – Ø 50 × 125 mm, height compensation 5-100 mm increment 1 mm
4	4	4	D22-05015-000	Displacement stop – 100 × 50 × 18 mm, scale on both sides
4		4	D22-05001-000	Universal stop /size 225 × 50 × 18 mm
	4	4	PE22-03001-000	Clamping and locating angle 175 × 175 mm (bore/oblong hole)
2	4	4	D22-05009-000	Universal stop L 300 - 300 × 50 × 18 mm
	2	2	D22-05003-000	Stop strip L 500 – 500 × 100 × 25 mm
	4	4	D22-07009-000	Variable screw clamp 45° with spindle – vertical pipe 250 mm
4	4	4	D22-07005-000	Variable screw clamp 180° with spindle – vertical pipe 250 mm
	4	6	D22-07001-000	Compensating swing clamp 180° with spindle – vertical pipe 300 mm
1	1	1	D22-10002-000	Round brush Ø 22 with protective cap, for cleaning the system bore
1	1	1	D22-10016-001	Extraction tool – 250 × 40 mm, AF 10
	1	1	D00-10007-000	Bench stone 200 × 50 × 25 mm
		1	PE22-03003-001	Clamping and locating angle H 500, DEMONT 760 M Black Edition, hardened casting, left
		1	PE22-03003-000	Clamping and locating angle H 500, DEMONT 760 M Black Edition, hardened casting, rt
		1	PE22-03004-001	Clamping and locating angle H 750, DEMONT 760 M Black Edition, hardened casting, left
		1	PE22-03004-000	Clamping and locating angle H 750, DEMONT 760 M Black Edition, hardened casting, rt

You can individually assemble or supplement your sets from the BROAD SELECTION OF DEMMELER accessories.
The DEMMELER general catalogue is available at www.demmeler.com.

Errors and changes reserved. Offer is non-binding.

D16 System 3D welding table PROFIEcoLINE (PE) 16

DEMMELER 3D welding table ProfiEcoLINE (PE) 16



- Worktop with D16 system bores in a 50 mm x 50 mm grid
- 3-row bore pattern on the table side plates with D16 system bores, 50 mm grid in the top, middle and bottom row
- Table sizes optionally available in hardened version, DEMONT 760 M (up to 760 Vickers)
- Precision scaling with millimetre graduation
- Coordinate marking of the bores in the X and Y-direction



Pivoting leg with stable M 24 x 2 threaded spindle, finely adjustable ± 30 mm.
Leg sleeve prevents pinching the welding hose and protects the threaded spindle against dirt.

Table size L x W	TABLE WITH STANDARD LEG	DEMONT 760 M HARDENED
1000 x 500 mm	PE16-01000-001	PE16-01000-011
1000 x 1000 mm	PE16-01001-001	PE16-01001-011
1200 x 800 mm	PE16-11019-001	PE16-11019-011
1500 x 1000 mm	PE16-01017-001	PE16-01017-011
1200 x 1200 mm	PE16-01056-001	PE16-01056-011
1500 x 1500 mm	PE16-01011-001	PE16-01011-011
2000 x 1000 mm	PE16-01002-001	PE16-01002-011
2400 x 1200 mm	PE16-01003-001	PE16-01003-011
3000 x 1500 mm ¹	PE16-01004-001	PE16-01004-011

¹Consists of 1500 x 1500 x 100 mm twice. Special sizes available upon request!
On request the table is also available in a stainless steel version!



Special sizes available upon request! On request the table is also available in a cast or stainless steel version!



DIFFERENT LEG VARIETIES ARE AVAILABLE UPON REQUEST.



Telescoping leg



Heavy-duty wheel

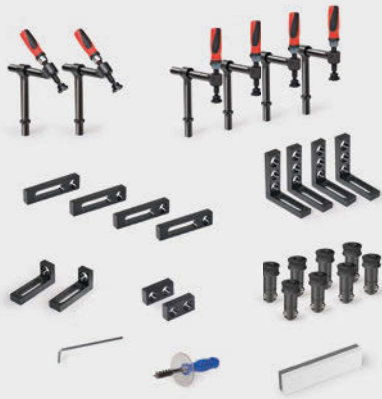


Anchoring leg

Errors and changes reserved. Offer is non-binding.

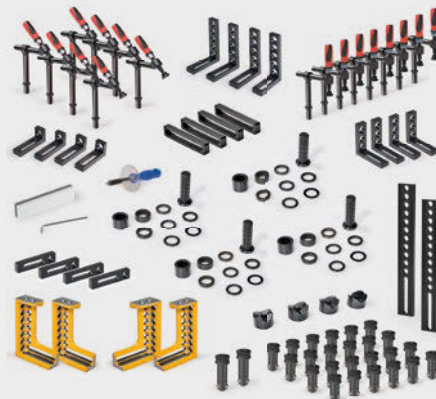
PROFIEcoLINE Set 710

Item no.: E16-52000-710 (29-piece)



PROFIEcoLINE Set 720

Item no.: E16-52000-720 (79-piece)



PROFIEcoLINE Set 730

Item no.: E16-52000-730 (114-piece)



PE Set 710	PE Set 720	PE Set 730	Item no.	Article designation
	4	4	E16-03008-000	ECO clamping and locating angle 140 x 90 x 25 mm
4	4	10	E16-03001-000	ECO clamping and locating angle 90 x 90 x 25 mm
2	4	4	E16-03001-002	ECO clamping and locating angle 90 x 37.5 x 25 mm
	2	1	E16-03002-000	ECO clamping and locating angle right 200 x 137.5 x 50 mm
	2	1	E16-03002-001	ECO clamping and locating angle left 200 x 137.5 x 50 mm
2		4	E16-05002-000	ECO universal stop small L55
4	4	12	E16-05001-000	ECO universal stop / large L115
	4	2	D16-09001-000	Spacer set 9 pieces
	4	2	E16-05015-000	ECO displacement-stop L150
		4	D16-05003-000	Stop strip 250 mm
	2	2	D16-05003-001	Stop strip 400 mm
4	8	8	D16-07005-000	Screw clamp 180° with spindle
2	8	8	D16-07009-000	Variable screw clamp 45° with adjusting screw
	4	8	D16-09003-000	V-block location Ø 80 mm
1	1	1	D16-10002-000	Round brush Ø 16 mm
1	1	1	D00-10007-000	Bench stone
1	1	1	E16-10008-000	Hexagonal wrench AF 5
		4	D16-06003-000	Connection bolt / short
	2	4	E16-06002-000	ECO clamping pin / long
8	24	32	E16-06001-000	ECO clamping pin / short
		1	D16-11001-002	Accessory cart D16

You can individually assemble or supplement your sets from the BROAD SELECTION OF DEMMELER accessories. The DEMMELER general catalogue is available at www.demmeler.com.

Errors and changes reserved. Offer is non-binding.



ERGONOMIX M 3000

THE NEW GENERATION



Unique
swivel range
up to 180°!

180°
 $M_k = 19.000 \text{ Nm}$

Limited space. Unlimited possibilities. Outstanding flexibility during welding or assembly work thanks to swivel range of up to 180° as standard.

- Large work area
- Solid construction
- Low installation height
- Unique swivel range up to 180° as standard
- Comfortable work
- Greater flexibility
- Improved workplace safety
- Increased productivity





Equipment for the Ergonomix M 3000 Optimum extension capabilities

<p>① Operation with pendant control panel series equipment</p> <p>② Controller in the control cabinet series equipment</p> <p>③ Operation with foot pedal Item no. Z00-03000-000</p> <p>④ Teach controller Item no. Z00-03000-003</p> <p>⑤ Laser scanner Item no. Z00-03000-006</p>	<p>⑥ Rotary feedthrough for querying the state of fixtures, electrical: Item no. Z00-03000-007 for pneumatic clamping fixtures: Item no. Z00-03000-008 for hydraulic clamping fixtures: Item no. Z00-03000-009</p> <p>⑦ Ground connector max. 400 A at 60% ED: Item no. Z00-03000-002 max. 700 A at 60% ED: Item no. Z00-01000-012</p>
--------------------------------------------------------------------------------------------------------------------------------------------------------------------------------------------------------------------------------------------------------------------------------------------------------------------------------------------	----------------------------------------------------------------------------------------------------------------------------------------------------------------------------------------------------------------------------------------------------------------------------------------------------------------------------------------------------------------------------------------------

● Series equipment ○ Special equipment

Ergonomix M basic model

THE NEW
GENERATION

Description		M 2000 / V1250	M 2000 / V2500	M 3000
Bearing load (w/o worktop)	[kg]	2000	2000	3000
D=max. interference area at 180° (w/o worktop) at height	[mm]	1000	1000	1000
	[mm]	650	650	650
Max. rotation speed	[RPM]	2	2	2
Min. rotation speed	[RPM]	0.75	0.2	0.2
Torque	[Nm]	1250	2500	3500
Tilt angle	[°]	180	180	180
Moment of tilt	[Nm]	8000	8000	19000
A=min. height (w/o worktop)	[mm]	490	490	525
B=max. Height at 180° swivel angle	[mm]	970	970	960
C=max. Height at 90° swivel angle	[mm]	1480	1480	1480
Pendant control panel		✓	✓	✓
10-speed control		✓	✓	✓
All axes adjustable via servo-hydraulic system		–	–	✓
Motors / rotary axis		1	2	1
Item no.		M02-02000-006	M02-02000-007	M03-03000-000



Request our current manipulator brochure as well.

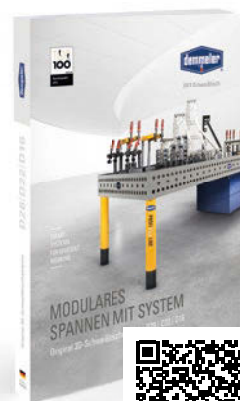
Specifications without worktop. Other equipment details on request.



NEW!

New from DEMMELER

As the inventor of the modular 3D welding table and clamping systems, we shape our development and innovation around the modular clamping and manipulation of components. We have developed and redesigned countless new products. A selection of which can be seen on this two page spread. We are happy to send you additional in-depth information in our new general catalogue in either printed, or digital format.

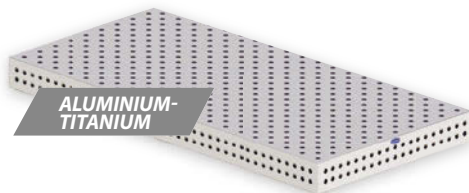


WORKTOPS AND 3D WORKTABLES



D28 3D Measuring, assembly and adjustment table

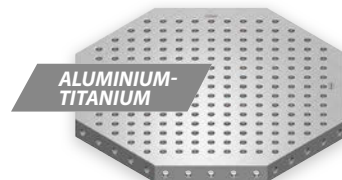
- Outstanding precision for adjusting, measuring and assembling components (Evenness 0.1mm/m)
- Hardened version DEMONT 860 M (up to 860 Vickers)



ALUMINIUM-TITANIUM

D22 PROFIPlusLINE Aluminium-titanium 3D table

- Recommended for automation solutions and robotics applications
- D22 system bores in a diagonal grid 100 mm x 100 mm



ALUMINIUM-TITANIUM

D22 3D Worktable Okto 100

- Preferred use with manipulators in robot cells for automation solutions
- High-strength aluminium-titanium alloy, for ~ 60 % weight reduction and ~ 10 % higher bending strength
- D22 system bores in a diagonal grid 100 mm x 100 mm



CLAMPING AND LOCATING ANGLE / SCREW CLAMPS



DEMONT 760 M
BLACK EDITION
THE NEW HARDNESS

D28 PROFIPlusLINE Clamping and locating angle casting hardened

- Hardened casting: ultimate stability and ductility
- Three full clamping sides with system bores
- Angle heights: 300 mm, 600 mm, 800 mm

D28 PROFIEcoLINE Clamping and locating angle casting hardened

- Hardened casting: ultimate stability and ductility
- Three full clamping sides with system bores
- Angle heights: 600 mm, 800 mm

D28 For all screw clamps

- Tube lengths of 220 mm were lengthened to 270 mm

BASE BRIDGES AND SPACER BLOCKS



D16 Base bridges

- Powerful in application on 3D laser machines
- Available in many additional lengths

D28 D16 Spacer block U-form hardened

- Spacer block with hardened surface, DEMONT 760 M
- For use as a table extension

D22 Spacer block U-form, aluminium-titanium

- Recommended for automation solutions and robotics applications
- Grid 50 x 50 mm



Convenient online ordering

DEMMELE Online and Webshop

Discover our entire product range for clamping systems, tools and accessories on our webpage and conveniently submit your order online.



Subscribe to our new YouTube Channel that showcases many products and example applications.

Fax order form – Fax no.: +49 (0) 83 35 98 59-27

Quantity	Item no.	Article designation	Unit price	Total price



“Original 3D clamping systems and welding tables”

Our general catalogue comprises 620 pages and offers a complete overview of our entire product line with many interesting example applications.

Please send me the general catalogue.

Your address / company stamp / signature

Would you like more information about our products?
We will gladly send you a free product brochure.
Please use check marks.

PDFs of the brochures are also available for download
at www.demmeler.com.



CNC clamping system



Manipulators



NC rotary tables



Tool change systems



OUR PERFORMANCE
makes THE DIFFERENCE

DEMMELE Maschinenbau GmbH & Co. KG
Alpenstraße 10, 87751 Heimertingen/Germany
Tel.: +49 (0) 83 35 98 59-0
Fax: +49 (0) 83 35 98 59-27
Email: vertrieb@demmeler.com
Website: www.demmeler.com

Your authorised dealer: